



## さいたま暮らしの情報

Information for Living in Saitama City

Información de vida de la ciudad de Saitama

No.89 (Dec. 2023)

ひ ようじん か じ  
“火の用心” 火事をださない !!!

“Fire prevention” Stop fires before they start!!!

“Cuidado con el fuego” ¡¡No provoque incendios!!

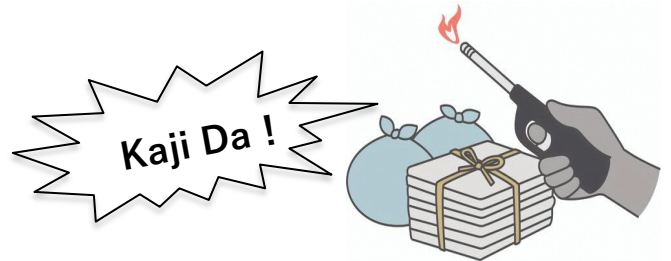


か じ  
火事だ!

か じ にほんご さけ  
火事の際は日本語で叫ぶ  
“かじだ!”

しょうぼうしょ でんわ  
119 消防署へ電話

“Fire!” in Japanese is:  
“Kaji da!”  
Call 119 for the Fire  
Department



Calli Da!!

Cuando ocurre un incendio, gritamos  
“Calli-Da” en japonés y llamamos al  
119 al cuartel de bomberos.

はっこうもと  
【発行元】

こうえきしゃだんほうじん  
公益社団法人

かんこうこくさいきょうかい  
さいたま観光国際協会 (STIB)

こくさいこうりゅう  
国際交流センター

ばしょ  
場所:

さいたま市浦和区東高砂町11-1

コムナーレ 9階

【Published】

Saitama Tourism and International Relations Bureau(STIB), International Exchange Center (IEC)

Adress : 9<sup>th</sup> floor of the Comunale Complex, Higashi Takasago-cho 11-1, Urawa-ku, Saitama City

・【Publicado por】Buró para el Turismo y las Relaciones Internacionales de Saitama (STIB), Centro de Intercambio Internacional

Domicilio : Piso 9 de Comunale, 11.1 Higashi-Takasago-cho, Urawa-ku, Saitama

TEL : 048-813-8500 FAX : 048-887-1505 E-mail: iec@stib.jp <https://www.stib.jp/kokusai/index.shtml>

Many of the causes of house fires occur due to carelessness or mishandling of fires used in daily life. Not only can you lose your property such as your house and belongings, but you can also lose your life.

To prevent house fires, learn about the causes of fires around you and take fire prevention measures on a daily basis.

## Causes of House Fires in Saitama City and Examples of Fire Prevention Measures

### The Top 3 Causes

#### Stove Fire

- ☐ Be sure to turn off the fire, before leaving the stove
- ☐ Do not place anything flammable near the stove
- ☐ Regularly clean the inside of the stove and fish grill

#### Arson (including suspected arson)

- ☐ Do not leave anything flammable around the house
- ☐ Take out the trash on the morning of the designated day
- ☐ Do not leave newspapers etc. in your mailbox

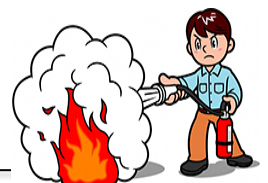
#### Cigarette-related fires

- ☐ Do not smoke in bed
- ☐ Do not accumulate ash in the ashtray
- ☐ Do not place flammable items around the ashtray



### Additional causes:

- Electrical** ⇒ ☐ Clear dust from outlets and unplug unnecessary electronics
- Heater-related** ⇒ ☐ Do not place flammable items around the stove
- Spray can-related** ⇒ ☐ Do not use near open flames such as stoves
- Lithium battery fires** ⇒ ☐ Replace the battery if it is swollen
- Other causes** ⇒ Children playing with fire, Candles, Pets, etc.



The Saitama City Fire Department introduces the main points of the Fire Prevention Guide on its website in foreign languages (English, Chinese, Korean, and Vietnamese). In addition to important fire prevention measures for residential fires, it also explains the importance of installing a residential fire alarm. Please use QR code to view the site.

QR code

