

#盆栽

#bonsai



#人形

#ningyo

# GOGO! SAITAMA CITY

Saitama City Sightseeing Guidebook



#さくら

#cherry blossoms



#うなぎ

#unagi



#鉄道

#railway







These are great spots  
for all-day family fun!

#GoingOut

#family

#Saitamabiyori



Miharashi Park  
Tel 048-623-0505

## Citizens' Forest/Minuma Green Center

This lush green space is located in the north part of Minuma-Tambo. It is a place for rest and relaxation where you can get close to nature and agriculture.

2-94 Minuma, Kita-ku  
Tel 048-664-5915  
8:30~18:00 (from April to September)  
8:30~17:00 (from October to March)  
New Year's (12/29 to 1/3)



## Chipmunk House (inside Citizens' Forest)

Get a close-up glimpse of chipmunks as they roam free through the forest.

10:00~16:00  
Every Monday (next day when Monday is a national holiday/public holiday) New Year's (12/29 to 1/3)



#Shinkansen



Half-day  
Sightseeing  
Route

## The Railway Museum

Small children and adults alike can interact with and learn about railways through train displays, driving simulations, dioramas, and more at this museum.

3-47 Onaricho, Omiya-ku Tel 048-651-0088 10:00~17:00 (Admission until 16:30)

Tuesday (may vary), year-end and New Year

Adult: ¥1,330

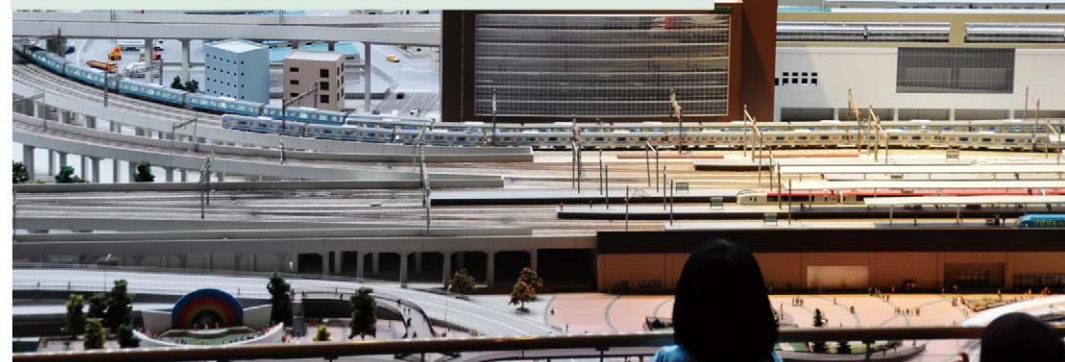
Elementary, Junior High, and High School Students: ¥620

Children (Preschool children 3 years and older): ¥310

Admission tickets (limited in number) should be purchased in advance



#dioramas



## Fruit Picking

#fruitpicking

Seasonal fruits taste even more delicious when you pick them as a family!

\*Some orchards require reservations.  
Please contact the orchard in advance.

Orchards in Saitama City



#pearpicking

harvest

September

\*Contact each farm/orchard for details.

Shirako Orchard 240 Yama, Minuma-ku 048-684-2326



#strawberrypicking

harvest

January-May

\*Contact each farm/orchard for details.

Strawberry House Hosoda 1782-1 Takagi, Nishi-ku 090-3408-1583

Haruoka Ichigo Orchard 3-186 Miyagayato, Minuma-ku 080-6554-7497

Misono Strawberry Land 803 Mamiya, Midori-ku 048-826-6360

090-5337-0391

Ekichika Strawberry Garden GREENPEACE 666 Daimon, Midori-ku 048-708-1095

Fukai Farm 459 Urajonji, Iwatsuki-ku 090-2629-3640

Iwatsuki Sightseeing Strawberry Farm Near 743 Kagiage, Iwatsuki-ku 090-4019-3750

Iwatsuki Strawberry Farm NAKAIWA 1089 Sasakubo Shinden, Iwatsuki-ku 080-3402-8600

080-4446-4115



#blueberrypicking

harvest

June-August

\*Contact each farm/orchard for details.

Nohara Sightseeing Farm 3-2-1 Nishi-Omiya, Nishi-ku 048-624-7973

Mikawa Orchard 3-140-2 Tsukamoto-cho, Nishi-ku 048-626-2288

090-1610-8301

Ojima Farm 937 Mikura, Minuma-ku 048-685-0446

Shirako Orchard 240 Yama, Minuma-ku 048-684-2326

Nishigata Blueberry Orchard 2233 Mimuro, Midori-ku 048-873-5042

Blueberry Plaza Urawa Near 910 Osaki, Midori-ku 090-1990-2020

Suzuki Shokusanen Ltd. 1656 Kitahara, Midori-ku denpoko@friend.ocn.ne.jp

Saitama City Agricultural  
Information Guidebook,  
"Toretori"







Enjoy delicious food and beverages  
around Omiya Station.



### Airon-tei

Airon-tei's teppanyaki is famous for using seasonal ingredients, including A5 Japanese Black Wagyu steaks.

2-297-1 Sakuragicho, Omiya-ku  
☎ 048-644-1541  
🕒 [Mon to Fri] 11:30 to 14:00 (L.O. 13:15)  
[Mon to Sat, Hol] 17:00 to 23:00  
(L.O. 22:00, L.O. for drinks 22:30)  
🚗 Sunday, 3rd Monday



### Restaurant Un, Deux, Trois

A Western-style restaurant that offers smoked Japanese-style foods like konnyaku and Omiya Neapolitan with homemade smoked bacon.

2-246 Sakuragicho, Omiya-ku  
☎ 048-644-6001  
🕒 11:30 to 14:00 (L.O. 13:30),  
18:00 to 24:00 (L.O. 23:15)  
🚗 No scheduled holidays



### Omiya Neapolitan

Once popular amongst railroad workers during Omiya's prosperous railroad-town era, this ketchup-flavored spaghetti dish has been revived as a local menu item! Each restaurant puts their own spin on this dish—give them all a try!

#omiyanapolitan



### Bushu Akane & Midori Dining

Enjoy authentic hamburger steaks at this udon noodle restaurant.

DOM Part II Gourmet Plaza 1F, 2-6  
Sakuragicho, Omiya-ku ☎ 048-645-6087  
🕒 [Mon to Fri] 11:00 to 15:00, 17:00 to 22:00  
[Sat] 11:00 to 15:00, 17:00 to 21:00  
🚗 Sunday



### Sushimasa

Please enjoy sushi, which is popular all around the world, at Sushimasa.

2-5-19 Sakuragicho, Omiya-ku ☎ 048-643-8080  
🕒 Lunch 11:00 to 14:30, Dinner [Mon to Sat] 14:30 to 22:00 [Sun/Hol] 14:30 to 21:30 Note: Last order is 30 minutes before closing time.  
🚗 No scheduled holidays (except New Year)



Restaurant Un, Deux, Trois

Bushu Akane & Midori Dining

Sushimasa

Taishu Kappo Masuya

West Exit Omiya Sta.

ARCHE

SOGO

Sonic City

To Utsunomiya & Takasaki

DOM (Marui / Daiiei)

East Exit

Omiya Rakuun

Omiya Kadomachi / RaiBoC Hall

Maru Maru Higashi-nihon (East Japan Cooperation Center)

Takashimaya

Izumiya

To Tokyo

Buta-no-Hitotoki



### Tosho Daihanten

An authentic Chinese restaurant where you can enjoy the Four Great Traditions of Chinese cuisine.

2-28 Miyacho, Omiya-ku  
☎ 048-644-0881 🕒 11:30 to 22:00 (L.O. 20:00)  
🚗 Open 365 days (except year-end & New Year holidays)



### Brewpub "Hikawa-no-Mori"

Savor Saitama City's first craft beer at Hikawa Brewery's on-site brewpub.

1-36-1 Takahanacho, Omiya-ku  
☎ 048-783-5123  
🕒 [Wed to Fri] 17:00 to 22:30 [Sat] 12:00 to 22:30 [Sun/Hol] 12:00 to 20:00 Note: Last order is 30 minutes before closing time.  
🚗 Monday, Tuesday



### Bistro Bon Appetit Omiya Restaurant

Hamburger steaks made of 100% coarsely ground meat without using any thickener are our signature dish.

2F, 1-82 Miyacho, Omiya-ku  
☎ 048-641-4845  
🕒 11:30 to 15:00, 17:30 to 22:30 (L.O. 21:30)  
🚗 Open 365 days



### Izumiya

Inexpensive, delicious and quick! Home-style izakaya with a wide variety of dishes.

1-43 Daimoncho, Omiya-ku  
☎ 048-641-0211  
🕒 10:00 to 22:00 (L.O. 21:45)  
🚗 No scheduled holidays



### Buta-no-Hitotoki

Have a blissful time at Buta-no-Hitotoki! This restaurant specializes in brand-name pork and offers authentic Italian dishes.

2F, 1-29 Nakacho, Omiya-ku ☎ 048-856-9863  
🕒 [Mon to Sat] 11:00 to 15:00, 17:00 to 23:00 [Sun/Hol] 11:00 to 15:00, 17:00 to 22:00 Note: Last order is 1 hour before closing time.  
🚗 No scheduled holidays



### Taishu Kappo Masuya

Cozy izakaya offering sashimi.

2-191-3 Sakuragicho, Omiya-ku ☎ 048-641-1182  
🕒 17:00 to 23:00 (L.O. 22:00)  
🚗 Sunday, national holidays, Saturday (irregularly)



### Sample these in Saitama City!

These four "Saitama Best Selection" sakes are made by breweries that were founded in Saitama over 100 years ago. Give them a try when you visit!



### Urawa-no-Sake Uraa

Uchiki Sake Brewery  
6-13-15 Nishibori, Sakura-ku



### Kinmon Sekaidaka Ginjo50

Koyamahonke Sake Brewery  
1798 Sashiogi, Nishi-ku



### Seishu Kokonezakura Daiginjo Heiseihiroba

Otaki Sake Brewery  
663 Hizako, Minuma-ku



### Otemon Daiginjo

Suzuki Sake Brewery  
4-8-24 Honcho, Iwatsuki-ku





Enjoy a relaxing time  
at unique bathing spots.

#relaxing  
#hotsprings

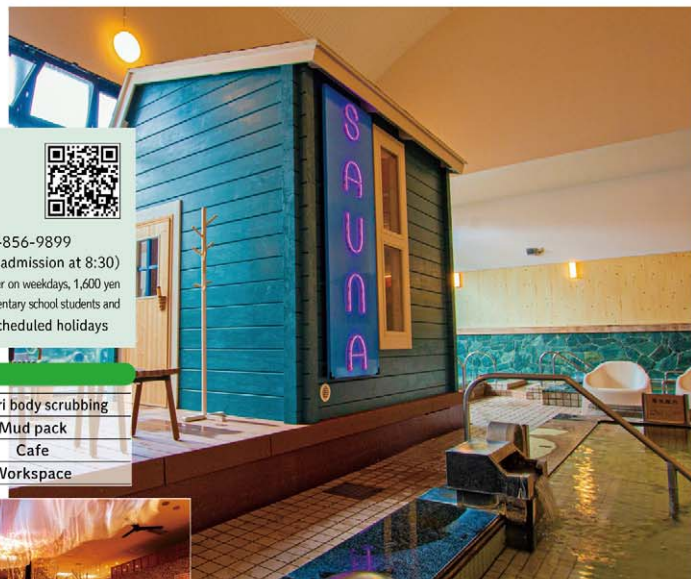
## Ofuro café utatane



📍 4-179-3 Onaricho, Kita-ku 📞 048-856-9899  
🕒 10:00 to 9:00 the next morning (last admission at 8:30)  
💰 1,400 yen for junior high school students and older on weekdays, 1,600 yen on weekends and national holidays (half price for elementary school students and younger) Free for children under 3 years old 📅 No scheduled holidays

### Major facilities

Accommodations	Akasuri body scrubbing
Outdoor bath	Mud pack
Sauna/Public sauna	Cafe
Traditional Thai massage	Workspace



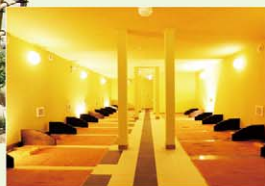
## Koharubiyori



📍 3-191 Someya, Minuma-ku 📞 048-686-3636  
🕒 10:00 to 24:00 on weekdays, 9:00 to 24:00 on weekends and national holidays (last admission at 23:15)  
💰 900 yen for adults (junior high school students and older) on weekdays, 1,000 yen on weekends and national holidays 550 yen for children (5 years old and older) on weekdays, 650 yen on weekends and national holidays \* Only children 5 years old or older are admitted  
📅 Open 365 days (may close temporarily)

### Major facilities

Outdoor bath
Bedrock bath
Tower sauna
Barber shop
Massage
Restaurant



## Yukai Soukai Yukemuri-Yokocho Omiya

📍 5-1010 Mihashi, Nishi-ku 📞 048-620-1126  
🕒 10:00 to 25:00 (last admission at 24:30 (midnight))  
💰 880 yen for adults on weekdays, 1,000 yen on weekends and national holidays (discount after 20:00) 500 yen for children on weekdays, 600 yen on weekends and national holidays  
📅 Open 365 days (may close temporarily)



### Major facilities

Outdoor bath
Sauna
Restaurant
Body and foot massage
Akasuri body scrubbing
Barber and beauty salon



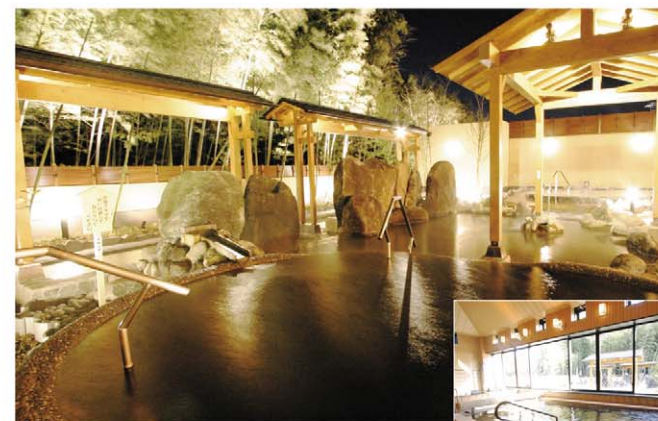
## Saitama Seiganji-Onsen



📍 683-4 Seiganji, Nishi-ku 📞 048-625-7373  
🕒 10:00 to 24:00 (last admission at 23:30)  
💰 750 yen for adults on weekdays, 850 yen on weekends and national holidays, 400 yen for children on weekdays, 450 yen on weekends and national holidays 📅 Open 365 days (may close temporarily)

### Major facilities

Outdoor bath
Sauna
Akasuri body scrubbing
Massage
Barber shop
Restaurant



## SPA HERBS



📍 1-816-8 Uetakecho, Kita-ku 📞 048-669-6626  
🕒 [Bath] 9:00 to 25:00 (last admission at 24:00)  
💰 [Bath Plan-Standard] 1,100 yen for adults (junior high school students and older) on weekdays, 1,320 yen on weekends and national holidays, 575 yen for children (4 to 12 years old) on weekdays, 685 yen on weekends and national holidays  
📅 Open 365 days (may close temporarily)

### Major facilities

Outdoor bath	Body and foot care
Bedrock bath	Restaurant
Aromatherapy treatment/Esthetician	Cafe
Sauna	Akasuri body scrubbing







An area with a variety of shops, restaurants, and entertainment facilities.

#さいたま新都心

#SaitamaShintoshin



## cocoon city

4-263-1 Kishikicho, Omiya-ku  
048-601-5050 (main)  
10:00 to 21:00



#saitamasweets



## cocoon city Rururu Okashisan

1F, cocoon2  
048-788-1200  
10:00 to 21:00



## cocoon city CAFE THE VŪKE

1F, cocoon2  
048-788-3567  
10:00 to 21:00 (L.O.20:30)



## Saitama Super Arena

8 Shintoshin, Chuo-ku  
048-601-1122

#tamaarī



## Saitama-Shintoshin Park

1-190-24 Kitabukurocho, Omiya-ku

# Saitama-Shintoshin



## Alpino Village

Built on the concept that "deliciousness and happiness go hand in hand," this collection of restaurants has options for fans of French, Italian, and Japanese cuisine.



## alpino

1-130 Kitabukurocho, Omiya-ku 048-641-9489  
11:30~14:00 (L.O.), 17:30~20:30 (L.O.)

Note: May change for Fridays, Saturdays, and the day before a national/public holiday  
Monday



## il cuore

1-148 Kitabukurocho, Omiya-ku 048-647-2876  
11:30~14:00 (L.O.), 17:30~20:30 (L.O.)

Monday



## Sutekiya-san

1-147 Kitabukurocho, Omiya-ku 048-644-9961  
11:30~14:00 (L.O.)

Wednesday/3rd Thursday of the month



## Okashiya-san

1-130 Kitabukurocho, Omiya-ku 048-647-8805  
10:00~19:00

Tuesday (Tuesday and Wednesday once a month)

## Keyaki Hiroba

This recreation space is shaded by Japanese zelkova trees (keyaki). Restaurants and shops line the first floor.



#illuminationS

10 Shintoshin, Chuo-ku

Saitama-Shintoshin and Kita-Yono Stations connect via 2nd floor/storey deck.



Markets, illuminations, and other fun events are held here.

## Mint Museum Saitama Branch

This museum exhibits old coins, commemorative coins, and other valuable historical materials. Visitors can tour the factory where coins and medals are manufactured on weekdays.



1-190-22 Kitabukurocho, Omiya-ku 048-645-5899

9:00 to 16:30 (Admission until 16:00)

3rd Wednesday of the month, year-end and New Year holidays (Dec.29 to Jan.3) and other unscheduled holidays  
Free admission







# Omiya Bonsai Village



Half-day  
Sightseeing  
Route

Visitors can walk around the world's first publicly-run bonsai art museum as well as the world-famous Omiya Bonsai Village, enjoying the artistry of each.



## Fuyo-en



This garden specializes in "yose-ue", a style of bonsai where multiple trees are planted together.

96 Bonsaicho, Kita-ku  
048-666-2400

## Kyuka-en



Kyuka-en creates bonsai that showcase nature's beauty.

131 Bonsaicho, Kita-ku  
048-663-0423

## Toju-en



Toju-en has been holding bonsai classes for over 50 years. Coniferous bonsai are their specialty.

247 Bonsaicho, Kita-ku  
048-663-3899

## Mansei-en



This garden produces bonsai and *suiseki* (viewing rock) displays.

285 Bonsaicho, Kita-ku  
048-871-9255

## Seiko-en



This garden focuses on cultivating refined bonsai that reflect the changing seasons.

268 Bonsaicho, Kita-ku  
0120-464-870

## Shosetsu-en



Shosetsu-en is famous for cultivating airy, naturally-spaced bonsai. This garden also has an on-site pottery studio.

2-640 Higashi-Onaricho, Kita-ku  
048-664-5332

## Bonsai Ono



We grow and sell palm-sized bonsai and other ornamental plants. \*Reservations required when you visit.

1373 Katayanagi Minuma-ku  
090-2446-4403

#Omiyabonsaiartmuseum



## The Omiya Bonsai Art Museum

This museum displays precious artistic and academic items related to bonsai. From masterpiece trees to ukiyo-e paintings, their collection contains a wide variety of works.

2-24-3 Torochi, Kita-ku 048-780-2091 (March-October) 9:00 to 16:30, (November-February) 9:00 to 16:00 Note: Last admission to all gardens is 30 minutes before closing

Thursday (open national/public holidays); year-end and New Year holidays, and other non-scheduled days

Adults: ¥310 (¥200); High school and university students/visitors 65 years and older: ¥150 (¥100); Elementary/primary and middle school students: ¥100 (¥50) Note: One person accompanying a disabled person with a certificate of disability is half price; the prices in brackets are per person for groups of 20 or more.



## Omiya Bonsai Festival



Bonsai lovers from all over the world gather at Omiya Bonsai Village to see exhibitions held by residents and purchase bonsai, pots, and wildflowers.





Stroll through Hikawa-sando's relaxing greenery by day, or enjoy its gently-lit scenery at night.

#大宮

#Omiya

## Hikawa-sando Approach

Beautiful Japanese zelkova trees are lined up along both sides of the road for about 2 km north to south from the Nakasendo. Lined with stylish cafes, the approach to Hikawa-jinja shrine is perfect for a stroll.

#hikawaSando



## Omiya Rakuun Yoshimoto Theater

Opened in 2014. This theater is home to "Omiya Seven", a comedy group whose members serve as Saitama Tourism ambassadors.

📍 Omiya Rakuun 6F, 1-60 Miyacho, Omiya-ku ☎ 048-782-6871  
🕒 Open at 16:00 on weekdays, 11:00 on weekends and national holidays  
🚶 No scheduled holidays 🚶 1-minute walk from East Exit of Omiya Station



Omiya Seven Magical Lovely



## Omiya Kadomachi EAST/WEST

This commercial facility is a place where visitors can have fun and find hidden treasures. It opened near Omiya Station's East Exit in 2022.

📍 2-118 Daimoncho, Omiya-ku 🕒 Stores 10:00 to 22:00, restaurants 11:00 to 23:00 (may vary in some shops)  
🚶 5-minute walk from Omiya Station's East Exit



## Omiya Park

Enjoy seasonal sceneries in this popular community space. Omiya Park also features a museum and a small zoo.

📍 4 Takahana-cho, Omiya-ku ☎ 048-641-6391



### Major facilities

NACK5 Stadium Omiya  
Omiya Park Baseball Stadium  
Omiya Velodrome  
Omiya Park Zoo  
Museum of History and Folklore



#OmiyaParkZoo



## Saitama Sweets along Hikawa-sando



Hikawa Dango



Lemondo



OTTO CAFE



GELATO & PIZZA ugo

## Bibli

A base facility for tourism, local business, and information dissemination. It accommodates various stores and the Saitama Tourism and International Relations Bureau.

📍 2-1-1 Takahanacho, Omiya-ku



## Musashi Ichinomiya Hikawa-jinja Shrine

One of Japan's most prominent old shrines with a history that is said to date back more than 2,400 years.

📍 1-407 Takahana-cho, Omiya-ku ☎ 048-641-0137



## Omiya Takiginoh

Every May, a stage is especially set up inside the shrine grounds for nighttime Noh performances. The fantastic Noh performance lit up by the flames of firewood in the still of night is exceptional.





Atmospheric restaurants line the streets of Urawa, which was once a prosperous post town on the Nakasendo.

## Remains of the Urawa-shuku Honjin

2-6 Nakacho, Urawa-ku



## Tsuki-jinja Shrine

Shrine visitors are greeted by stone rabbits in lieu of the customary guardian dogs. Can you find all of the rabbits on the shrine's grounds?

3 Kishicho, Urawa-ku



## Sakai Jinshiro Shoten

This shop was founded over 150 years ago and offers a diverse range of goods, from vegetables pickled in sake lees and foods simmered in soy sauce to innovative products like chhena.

2-4-23 Nakacho, Urawa-ku

048-822-2110 (9:00~18:30)



# Urawa

#浦和

#Urawa



## Stamina Ramen

This ramen dressed with a "spicy" thick starchy sauce in a soy sauce-flavored broth with chives, minced meat, and bean paste is the soul food of Saitama City, commonly known as "Stamina". Nyannyan operates several restaurants near Urawa. The Urawa Nakacho restaurant was opened in May 2022.



## Nyannyan Urawa Nakacho restaurant

2-2-6 Nakacho, Urawa-ku

Twitter @urawa\_nyannyan



## Rafu

4-25-12 Kishicho, Urawa-ku

048-825-3910



## cafe uwaito

4-2-18 Kishicho, Urawa-ku 048-711-5870

Instagram @cafe\_uwaito



## Unagi Restaurants

You can find many long-standing restaurants here that use traditional cooking techniques and flavors passed down since the Edo period.



## Find Unako-chan!

Urawa Unako-chan is a character created to advertise Urawa's unagi (eel cuisine). Keep an eye out for Unako-chan in front of Urawa station, at parks, and inside eel restaurants: they're all over!



© Yanase Takashi/Yanase Studio

#Unakochan

© Yanase Takashi/Yanase Studio



## Hamana



Infinity Urawa 1F, 2-9-2 Nakacho, Urawa-ku

048-832-8790

## Nakamuraya



3-2-12 Takasago, Urawa-ku

048-822-2585

## Yamazakiya



1-10-8 Nakacho, Urawa-ku

048-822-7116

## Masuya



7-1-3 Kishicho, Urawa-ku

048-822-1101



Once a prosperous castle town, "Ningyo Town" Iwatsuki has retained many historical places. "Ningyo" are traditional Japanese dolls.

#NingyoTownIwatsuki



#岩槻

#Iwatsuki

## Iwatsuki Ningyo Museum

Collections focusing on dolls and toys from Japan and around the world as well as materials related to doll making are exhibited.

6-1-1 Honcho, Iwatsuki-ku ☎ 048-749-0222 🕒 9:00 to 17:00  
 ☞ Monday (open on national holidays), year-end and New Year holidays, and other unscheduled holidays  
 👤 Adults: ¥300 (¥200); High school and university students/visitors 65 years and older: ¥150 (¥100); Elementary/junior high school students: ¥100 (¥50) Note: One person accompanying a disabled person with a certificate of disability is half price; the prices in brackets are per person for groups of 20 or more.



Half-day  
Sightseeing  
Route

## Tofu Ramen Ranran

3-3-4 Honcho, Iwatsuki-ku  
 ☎ 048-757-9888



## Toki no Kane Bell

6-2 Honcho, Iwatsuki-ku



## MIYATAYA BAGEL

3-12-11 Honcho, Iwatsuki-ku  
 ☎ 048-606-3680



## Café ChaTora

4-1-7 Honcho, Iwatsuki-ku  
 ☎ 048-793-4751  
 Instagram @cafe.chatora



## Urakoji Park

4-4 Honcho, Iwatsuki-ku



## Otemon

3-1-1 Ota, Iwatsuki-ku  
 ☎ 048-758-1122

## Nigiwai Koryukan Iwatsuki

This facility shares information on the history and culture of Iwatsuki. Purchase souvenirs and enjoy Saitama European Vegetables at the on-site shop and cafe.

6-1-2 Honcho, Iwatsuki ☎ 048-757-2981  
 🕒 9:00 to 21:30 ☞ Year-end and New Year holidays  
 Yoroken Café  
 🕒 10:00 to 17:00 on weekdays, 10:00 to 18:00 on weekends and holidays ☞ Year-end and New Year holidays



Hisaizu-jinja Shrine To Higashi-Iwatsuki

Castle Ruins Park Ent.

Iwatsuki Commercial H. Sch.

Iwatsuki J. H. Sch.

Ota Elem. Sch.

Iwatsuki Elem. Sch.

Shibun

Iwatsuki Sta. Ent.

Iwatsuki Sta.

Iwatsuki Ward Office

To Omiya



## Hisaizu-jinja Shrine

Built about 1,500 years ago, this shrine has been beloved for a long time for protecting the Iwatsuki Castle town.

2-6-55 Miyacho, Iwatsuki-ku  
 ☎ 048-756-0503



## Major facilities

The remains of Iwatsuki Castle's dry moats, bulwarks, and the Kuro-mon and Ura-mon gates.  
 Karakuri-Tokei Clock  
 Kinu, Romancecar express train  
 Ningyozuka Doll Mound  
 Tennis court  
 Baseball field  
 Iwatsuki Civic Hall  
 Joshi Community Center

## Iwatsuki Joshi Park

This park has many sights to see, including the Kinu Train donated by the Tobu Railway, the Karakuri Clock, and part of Iwatsuki Castle's earthen bulwarks.

3-4 Ota, Iwatsuki-ku  
 ☎ 048-757-9122



## Nikko Onarimichi Road

Nikko Onarimichi Road was a road built during the Edo period for the shogun to use as he traveled to Nikko Toshogu shrine. As the road goes through Iwatsuki, it was also referred to as the Nikko-dochu Iwatsuki-dori and the Iwatsuki Kaido at the start of the Edo period. The Nikko Onarimichi Road had six post towns, but it's said that only Iwatsuki-shuku was used for accommodation. Milestones, an avenue of cedar trees, and other artifacts from the road can still be seen today.



## Iwatsuki Joshi Park Cherry Blossom Festival

EVENTS

Spring



Hina Ningyo Tour



Floating Hina  
Ningyo



Morning Glory  
Market

Summer



Autumn



Falconry Parade



Winter





#PublicArt



Half-day  
Sightseeing  
Route

## The Museum of Modern Art, Saitama



9-30-1 Tokiwa, Urawa-ku ☎ 048-824-0111

10:00 to 17:30 (Last admission to the exhibition room is 17:00)

Note: The archives on the 3rd floor are open from 13:00 to 17:00 on Tuesday, Thursday and Saturday

☎ Mondays (except for national/public holidays and Prefecture Foundation Day), Year-end and New Year's holidays, and for maintenance

☎ Free admission / MOMAS collection: Adults ¥200 (¥120), University and high school students ¥100 (¥60). Note: Figure inside the brackets is the fee for groups 20 or more. Special exhibits: Priced by exhibit.



### Musical Water Fountain

The fountain synchronizes with music played at set times and is illuminated at night.



## Urawa Art Museum

This museum's collection showcases local artists and works related to books.

Urawa Century City 3F, 2-5-1 Nakacho, Urawa-ku

☎ 048-827-3215

10:00 to 17:00 (20:00 on Friday and Saturday)

\*May vary according to exhibits

☎ Mondays (or the next weekday

if Monday falls on a holiday),

periods for changing exhibits, year-

end and New Year's

\*May close irregularly

☎ Varies according to exhibits



## Stained Glass

There is stained glass, which is art that combines color and light, at several locations in the city.



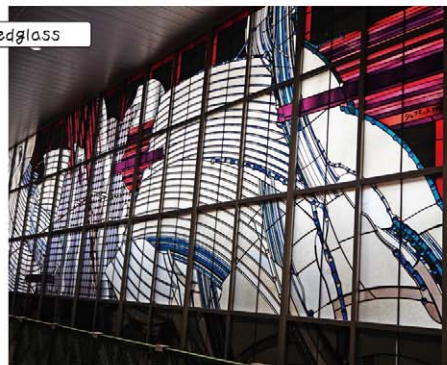
### The Railway Museum: "Passing Things"

Designed and Supervised by Yoko Yamamoto

October 14, 2007/Entrance zone on 2nd floor, The Railway Museum

Note: An admission ticket should be purchased in advance.

#stainedglass



### Omiya Station: "Light, Water and Life"

Designed and Supervised by Ludwig Schaffrath

June, 1982/Front of west entrance on second floor free passage, Omiya Station

Although Saitama-Shintoshin has numerous tall buildings and commercial facilities, it also has relaxing spaces that are surrounded by greenery. Numerous photogenic artworks are hidden throughout the area.

## Saitama-Shintoshin × Art

Saitama-Shintoshin has a wide variety of governmental agencies and commercial facilities. Artworks are dotted throughout the city.

#object



① Saitama-Shintoshin Station East-West Passageway



① "Hill of Mole Sauce"  
(MITSUNASHI Nobuo)



② "The Reptiles"  
(TANABE Mitsuo)



③ "Roundness of the Horizon"  
(UCHIDA Kazutaka)



④ Hill of Small Streams



⑤ "Live in a Star"

⑥ "Lively Things and Things That Look Alive"

Created by 280 elementary/primary school students and five artists who live in the city and the Kanto area.

⑦ Omiya Hokusagi Bridge







Saitama City is Japan's premier football town.  
The cheers of passionate fans reverberate through the city.



## Urawa Red Diamonds

Half-day  
Sightseeing  
Route



©URAWA REDS

### Saitama Stadium 2002

This is the largest dedicated football stadium in Asia. It was used to host football matches in the Tokyo 2020 Olympics.

📍 2-1 Misono, Midori-ku 📍 15-minute walk on the 1.2 km-long pedestrian footpath from Urawa-Misono Station on the Saitama Railway Line. Note: There are also shuttle buses running from surrounding stations on game days.



Relief (Isetan Urawa Store)

### RED VOLTAGE

This is the official shop of the Urawa Red Diamonds football club. They offer a diverse array of team merchandise, from everyday sundries to jerseys and other fan gear.

📍 Atré Urawa West Area 1F, 1-16-12 Takasago, Urawa-ku



©URAWA REDS



▶ A restaurant where fans gather

### RIKI

📍 1-3-7 Nakacho, Urawa-ku  
☎ 048-822-9443



Half-day  
Sightseeing  
Route

## Omiya Ardija



©1998 N.O. ARDIJA

### NACK5 Stadium Omiya

Built in 1964, this stadium hosted football matches during the Tokyo 1964 Olympics. It is Japan's first dedicated football stadium.

📍 4 Takahanacho, Omiya-ku 📍 20-minute walk from Omiya Station's East Exit/ 1-minute walk from the "Omiya Sakakajima" bus stop, accessible by taking the Kokusai Kogyo Bus heading to Doju Junkan from Omiya Station's East Exit/Approx. 10-minute walk from Omiya-koen Station and Kita-omiya Station on the Tobu Urban Park Line.



Relief (Takashimaya Omiya Store)



▶ A restaurant where fans gather

### HUB-British Pub

📍 Pioland Hotel 1F, 1-35-2 Miyacho, Omiya-ku  
☎ 048-645-8682



### Orange Square

Come visit Orange Square, the official Omiya Ardija club shop! This store offers a wide selection of products for football fans.

📍 Omiya Chuo Building, 1-20-1 Takahanacho, Omiya-ku  
☎ 0570-003839 (Information Navidial)



### Monument to the Birthplace of Football in Saitama

Urawa's legacy as a "Football Town" started at Saitama Prefectural Normal School. A bronze statue that was built on the site of the demolished school now stands in front of Saitama City Hall.

#BirthplaceofFootballinSaitama



### Stained Glass at Urawa-Misono Station

A huge stained glass artwork that is 20 meters wide and has the 99 characters from the manga 『Captain Tsubasa』, which is famous across the world.

#TSUBASA

"Captain Tsubasa: Spread Your Wings Around the World"

©Yoichi Takahashi/SHUEISHA





GOGO!  
SAITAMA  
MOVIE



#JapanNo1CherryBlossomCorridor

## Cherry Blossom Corridor in Minuma-Tambo

With ~2,000 trees blooming along an over 20 km long path, this is the best walkable cherry blossom corridor in Japan.



[Minuma-Tambo]



[Cherry Blossom Corridor]

## Roses in Yono Park

Well-known for its cherry blossoms and roses, this park boasts ~300 cherry trees and over 3,000 roses of ~190 varieties. The Rose Festival is held here every May.

1 Hommachi-Nishi, Chuo-ku



#yonoroses



No matter the season, there's always something blossoming in Saitama City! Take a leisurely stroll and enjoy the beautiful flowers in bloom. Keep an eye out for cherry blossoms and Japanese primroses- they're the official flowers of Saitama!

#FourSeasons

## Flowers in the Omiya Hana-no-Oka Agriculture and Forestry Park

Flowers bloom in every season at this sprawling park. Its 27-acre grounds sit on the border of Nishi Ward and Ageo City.

124 Nishi-Arai, Nishi-ku



#hananooka

## Bamboo Grove in Minuma Tsusenbori Park

In addition to a footpath and tranquil bamboo grove, the Suzuki Family Residence can also be found along the Minuma Tsusemori Canal. The Suzukis were in charge of managing the boats on the canal.

Omagi, Midori-ku



#MinumaTsusenbori

## Minuma Tsusenbori Canal

This lock canal was built in 1731, roughly 180 years before the similarly-designed Panama Canal.





# Japanese Manners & Customs

~ Tips and Tricks for an Enjoyable Experience ~



## 居酒屋にて At an Izakaya (Japanese Pub)

日本特有の「お通し」とは、ちょっとした料理がついてくるチャージ料みたいなものだ。Izakayas often serve *otoshi*, a compulsory appetizer that is added to your bill. They function similarly to a cover charge.



これが日本の居酒屋か！  
So this is an izakaya!



注文前に頼んでない料理が出てくる。  
A dish is served before you order food.



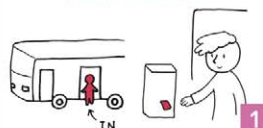
まさか無料サービスか？  
日本は素晴らしい！！  
Wow, free food!  
Japan is awesome!



無料じゃなかったのか？  
Oh, it wasn't free.

## バスにて On the Bus

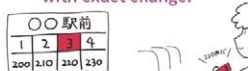
後ろ側のドアから乗車し、整理券をお取りください。  
Please get onto the bus from the door at the rear and then take a numbered ticket.



目的のバス停に停車するアナウンスが流れたら、ボタンを押してください。  
Once you hear the announcement for your bus stop, press the button.



料金は車内前方の料金表と乗るときに取った整理券で確認し、お釣りの出ないように用意してください。  
To pay the fare, check the number on your ticket against the number on the fare display at the front of the bus, and pay with exact change.



お金を整理券を料金箱に入れて、降りてください。  
Place the money and your ticket into the fare box, and then get off the bus.

さいたま市のバスは後ろから乗るけど、都内は前から乗るバスが多いよ。  
In Saitama, you get onto the bus from the rear, but in Tokyo you get onto most buses from the front.



上記は2019年の『学生政策提案フォーラムinさいたま』にて、優秀賞を受賞した『埼玉大学 齋藤ゼミナール』学生さんたちの作品を基に構成しました。  
This page has been created based on the artworks of the students of the Saito Seminar from Saitama University who received an outstanding performance award at the Student Policy Proposal Forum in Saitama 2019.



## 交通機関 Transportation

●電車  
TRAIN  
電車から降りる人が先

Let people get off the train before getting on.



邪魔にならないよう、横で待つ  
Stand to the side so as to not get in the way.

●タクシー  
TAXI  
乗り場で乗車か、手を挙げて止める

Get a taxi at a taxi stand or wave your hand.



チップはいらない  
Tipping is not required.

●ICカード  
IC card  
小銭を用意する必要がないキャッシュレスも便利

A cashless IC card can be handy because you don't need to prepare coins.



※購入の際はそれぞれの利用可能エリアを確認して選びましょう。  
Note: Check where the respective IC cards can be used and choose the one right for you.



## 入浴施設 Bathing Facilities

浴室に入るときには衣服を脱いでください。



Take off all of your clothes before getting into the bathing area.

湯船に入る前に体を洗い流してください。



Wash your body before getting into the bathtub.

湯船にタオルは入れないでください。



You should not dip the towel in the water.

浴室内は走らないでください。



Please do not run inside the bathing area.

長い髪は束ねて、湯船に落とさないようにしましょう。



If you have long hair, tie it up, so that it doesn't go in the bath water.

湯船の中で体を洗わないでください。



Do not wash your body in the bathtub.



## シェアサイクル Bicycle Sharing

HELLO CYCLING



専用のステーションであれば、どこでも貸出・返却が可能です。ご利用にあたっては、「HELLO CYCLING」アプリのダウンロードが必要です。

You can rent and return bicycles at any dedicated bicycle station. To use the service, you need to download the "HELLO CYCLING" app.

Download the app:



アプリのダウンロードはこちらから





# 指さし会話帳 POINT and TALK

私は日本語が話せないので以下の文と単語を指さしてください。  
Point to the sentences and words to communicate.

アレルギー Allergy	魚 Fish
卵 Egg	貝類 Shellfish
乳製品 Dairy products	エビ Shrimp
小麦 Wheat	カニ Crab
そば Soba noodles	野菜 Vegetables
大豆 Soybeans	キノコ Mushrooms
牛 Beef	山菜類 Wild vegetables
豚 Pork	海藻類 Seaweed
鶏 Chicken	酒 Alcohol
家電 Home electronics	文房具 Stationery
お菓子 Sweets	アクセサリ Accessory
お茶 Tea	たばこ Cigarettes

## 食事 DINE

〇名の席はありますか?  
Do you have a table for ○ people?  
→ただいまご案内します。／満席です。  
I will take you to your table. / The restaurant is full.

何がおすすですか? →〇〇がおすすめです。  
What do you recommend? I recommend ○○.

〇〇は食べません。  
I can't/don't eat ○○.

〇〇が欲しいです。  
I would like ○○.  
→ただいまお持ちします。／ご用意できません。  
I will bring it now. / We cannot prepare that.



## 買い物 SHOPPING

〇〇売場はどこですか?  
Where is your ○○ department?  
〇〇まで送りたいです。  
I want to send it to ○○.  
→こちらの用紙にご記入ください。／できません。  
Please fill out this form. / We cannot do that.

これをください。  
I would like to buy this.



## 移動 TRANSPORTATION

〇〇に行きたいです。  
I want to go to ○○.

〇〇ホテル  
〇〇 Hotel

〇〇レストラン  
〇〇 Restaurant

〇〇駅  
〇〇 Station

近くのコンビニ  
Nearby convenience store

## 緊急 EMERGENCY

救急車を呼んでください。  
Please call me an ambulance.

病院に行きたいです。／具合が悪いです。  
I want to go to a hospital. / I don't feel well.

〇〇を無くしました。／〇〇を置いてきました。  
I lost ○○. / I misplaced ○○.

緊急電話番号  
Emergency phone number

119 救急  
Emergency

110 警察  
Police

## 支払い PAY

免税になりますか? 領収書・税金払い戻しの申請書をください。  
Is this duty free? Please give me a receipt/a tax-return form.

クレジットカードは使えますか?  
Can I use a credit card?  
→現金のみです。／このカードは使えます。  
No, cash only. / Yes, you can use a credit card.

(キャッシュレス)このコードを読み取ってください。／ここに貼ってください。  
(Cashless payment) Please scan this code. / Please place here.

電子マネーで支払いたいです。  
I want to pay with e-money.

## 便利なフレーズ USEFUL

タクシーを呼びたい。  
I want to call a cab/taxi.

〇〇はどこですか? Where is ○○?

Wi-Fiは使えますか? Can I use Wi-Fi?

エレベーター Elevator	銀行 Bank
エスカレーター Escalator	スーパー Supermarket
駅 Train station	デパート Department Store
バスのりば Bus stop	美術館 Art Museum
タクシーのりば Taxi stand	博物館 Museum
なくす Lost	スマートフォン Smartphone
置き忘れ Forgotten item	腹痛 Stomach ache
病気 Illness	吐き気 Nausea
怪我 Injuries	鍵 Key
発熱 Fever	パスポート Passport
薬 Medicine	スーツケース Suitcase
非常口 Emergency exit	お財布 Wallet
おむつ Nappy/diaper	ベビーカー Pram/stroller
授乳室 Nursing room	トイレ Rest room
車いす Wheelchair	喫煙場所 Smoking area
スロープ Slope	生理用品 Sanitary goods

1 2 3 4 5 6 7 8 9 0

カード Card	支払回数 Number of payments	サイン Sign	現金 Cash	円 Yen	部屋番号 Room number	階 Floor	泊 Night	人 Persons
-------------	----------------------------	-------------	------------	----------	---------------------	------------	------------	--------------

はい  
YES

いいえ  
NO

AM

PM



時  
time

分  
minutes

いつ  
When

だれが  
Who

なぜ  
Why

どこで  
Where

なにが  
What

どうやって  
How



# INFORMATION



## Maru Maru Higashi-nihon (East Japan Cooperation Center)



Just a minute's walk from Omiya Station's East Exit, this building is bursting with local specialties from East Japan and recommended Saitama souvenirs. The regional sake-tasting corner is a highlight!

📍 1-6-1 Daimoncho, Omiya-ku ☎ 048-856-9111  
🕒 11:00 ~ 19:00 🗓 Mondays and other irregular holidays



# Accommodation Facilities

	Facility name	Address	Phone	Access
Omiya	SUPER HOTEL Premier Saitama Omiyaeki Higashiguchi	4-112-1 Miyacho, Omiya-ku	048-877-9000	4-minute walk from Omiya Station East Exit
	Hotel Trend Omiya	5-25-1 Miyacho, Omiya-ku	048-642-7717	5-minute walk from Omiya Station East Exit
	Toyoko Inn Omiya-eki Higashi-guchi	2-29-2 Miyacho, Omiya-ku	048-658-1045	5-minute walk from Omiya Station East Exit
	eeGee STAY Omiya	1-83 Miyacho, Omiya-ku	048-782-4607	3-minute walk from Omiya Station East Exit
	REF Omiya by VESSEL HOTELS	2-116-6 Daimoncho, Omiya-ku	048-650-1900	3-minute walk from Omiya Station East Exit
	SUPER HOTEL Saitama Omiyaeki Nishiguchi	1-12-6 Sakuragicho, Omiya-ku	048-645-9000	10-minute walk from Omiya Station West Exit
	HOTEL MAIN OMIYA	1-6-92 Sakuragicho, Omiya-ku	048-648-8886	1-minute walk from Omiya Station West Exit
	Palace Hotel OMIYA	1-7-5 Sakuragicho, Omiya-ku	048-647-3300	3-minute walk from Omiya Station West Exit
	MaRRoad Inn Omiya	2-173 Sakuragicho, Omiya-ku	048-645-5111	5-minute walk from Omiya Station West Exit
Shintoshin	CANDEO HOTELS OMIYA	1-401-1 Sakuragicho, Omiya-ku	048-658-7300	6-minute walk from Omiya Station West Exit
	Excel Inn OMIYA	1-164 Sakuragicho, Omiya-ku	048-650-1515	2-minute walk from Omiya Station West Exit
	APA Hotel Saitama Shintoshin-Eki Kita	2-72 Kishikicho, Omiya-ku	048-650-1111	8-minute walk from Saitama-Shintoshin Station East Exit
	Toyoko Inn Saitama Shintoshin	4-262-1 Kishikicho, Omiya-ku	048-657-1045	3-minute walk from Saitama-Shintoshin Station East Exit
	Hoshikaway	2-85 Kishikicho, Omiya-ku	048-641-3991	5-minute walk from Saitama-Shintoshin Station East Exit
Urawa	Hotel Brillante Musashino	2-2 Shintoshin, Chuo-ku	048-601-5555	5-minute walk from Saitama-Shintoshin Station West Exit
	THE MARK GRAND HOTEL	3-2 Shintoshin, Chuo-ku	048-600-5500	10-minute walk from Saitama-Shintoshin Station West Exit
	Hotel Metropolitan Saitama-Shintoshin	11-1 Shintoshin, Chuo-ku	048-851-1111	1-minute walk from Saitama-Shintoshin Station West Exit
Iwatsuki	Business Hotel Hosenkaku	26-17 Higashinakacho, Urawa-ku	048-882-4633	3-minute walk from Urawa Station East Exit
	JR-EAST HOTEL METS URAWA	1-16-7 Takasago, Urawa-ku	048-826-0011	1-minute walk from Urawa Station West Exit
	Urawa Washington Hotel	2-1-19 Takasago, Urawa-ku	048-825-4001	3-minute walk from Urawa Station West Exit
	Royal Pines Hotel Urawa	2-5-1 Nakacho, Urawa-ku	048-827-1111	7-minute walk from Urawa Station West Exit
etc.	Tokiwa Kaikan	6-4-21 Tokiwa, Urawa-ku	048-822-4411	16-minute walk from Urawa Station West Exit
	Business Hotel Miura	4-1-8 Honcho, Iwatsuki-ku	048-792-0797 (reservation)	5-minute walk from Iwatsuki Station East Exit
	Toyoko Inn Saitama Iwatsuki Ekimae	1-2-3 Honcho, Iwatsuki-ku	048-615-1045	1-minute walk from Iwatsuki Station East Exit
	Hotel Ichimatsu	1-2-27 Funai, Iwatsuki-ku	048-798-2359	15-minute walk from Iwatsuki Station East Exit
	Adumaya	6-1-15 Honcho, Iwatsuki-ku	048-756-0159	10-minute walk from Iwatsuki Station East Exit
	Plaza Hotel Urawa	1-1-1 Shikatebukuro, Minami-ku	048-863-5111	1-minute walk from Naka-Urawa Station West Exit
	Bessyonuma Kaikan	4-14-10 Bessho, Minami-ku	048-861-5219	10-minute walk from Naka-Urawa Station East Exit
	Hotel New Saitama	2-44-17 Mimamiurawa, Minami-ku	048-884-2111	1-minute walk from Minami-Urawa Station East Exit
	DERME Shinmei Hotel & Weekly	1-11-12 Shinmei, Minami-ku	048-836-2334	6-minute walk from Minami-Urawa Station West Exit
	Toyoko Inn Urawa Misono-eki Higashi-guchi	4-7-1 Misono, Midori-ku	048-812-2045	2-minute walk from Urawa-Misono Station East Exit
	SHINDOYAMAYA	3-110 Horinouchicho, Omiya-ku	048-641-0501	10 minutes by taxi from Omiya Station East Exit
	Satsuki Ryokan	1-376 Takahanacho, Omiya-ku	048-647-5577	5-minute walk from Kita-Omiya Station
	Ofuro café utatane	4-179-3 Onaricho, Kita-ku	048-856-9899	10-minute walk from Tetsudo-Hakubutsukan Station
	Yono Dai-ichi Hotel	6-4-22 Honmachinishi, Chuo-ku	048-852-6161	5 minutes by taxi from Kita-Yono Station
	Unirose Omiya T.S	6-699-1 Mihashi, Nishi-ku	048-856-9115	10 minutes by car from Omiya Station

## Tourist information centers in Saitama City



### Omiya Tourist Information Center

☎ 048-644-1144  
📍 630 Nishikicho, Omiya-ku (Inside JR Omiya Station)  
🕒 10:00 ~ 18:30 🗓 From December 29 to January 3

### Urawa Tourist Information Center

☎ 048-883-1055  
📍 Atré Urawa South Area, 1-16-12 Takasago, Urawa-ku (Connected to JR Urawa Station) 🕒 10:00 ~ 18:30  
🗓 Year-end and New Year holidays and closed days of Atré Urawa

### Saitama-Shintoshin(Saitama New Urban Center) Tourist Information Center

☎ 048-600-0070  
📍 2 Kami-Ochiai, Chuo-ku (Located along the east exit free passageway, JR Saitama Shintoshin Station) 🕒 10:00 ~ 18:30 🗓 From December 29 to January 3

### Iwatsuki Tourist Information Center

☎ 048-797-7585  
📍 1-1-1 Honcho, Iwatsuki-ku (Inside the East-West Passageway in Iwatsuki Station on the Tobu Urban Park Line(Noda Line)) 🕒 10:00 ~ 18:30 🗓 From December 29 to January 3

## Volunteer guides

Volunteers will show you what Saitama City has to offer.

[Contact]  
Saitama Tourism and International Relations Bureau (STIB)  
☎ 048-647-1021

### Omiya Volunteer Guide Association



### Urawa Volunteer Guide Association

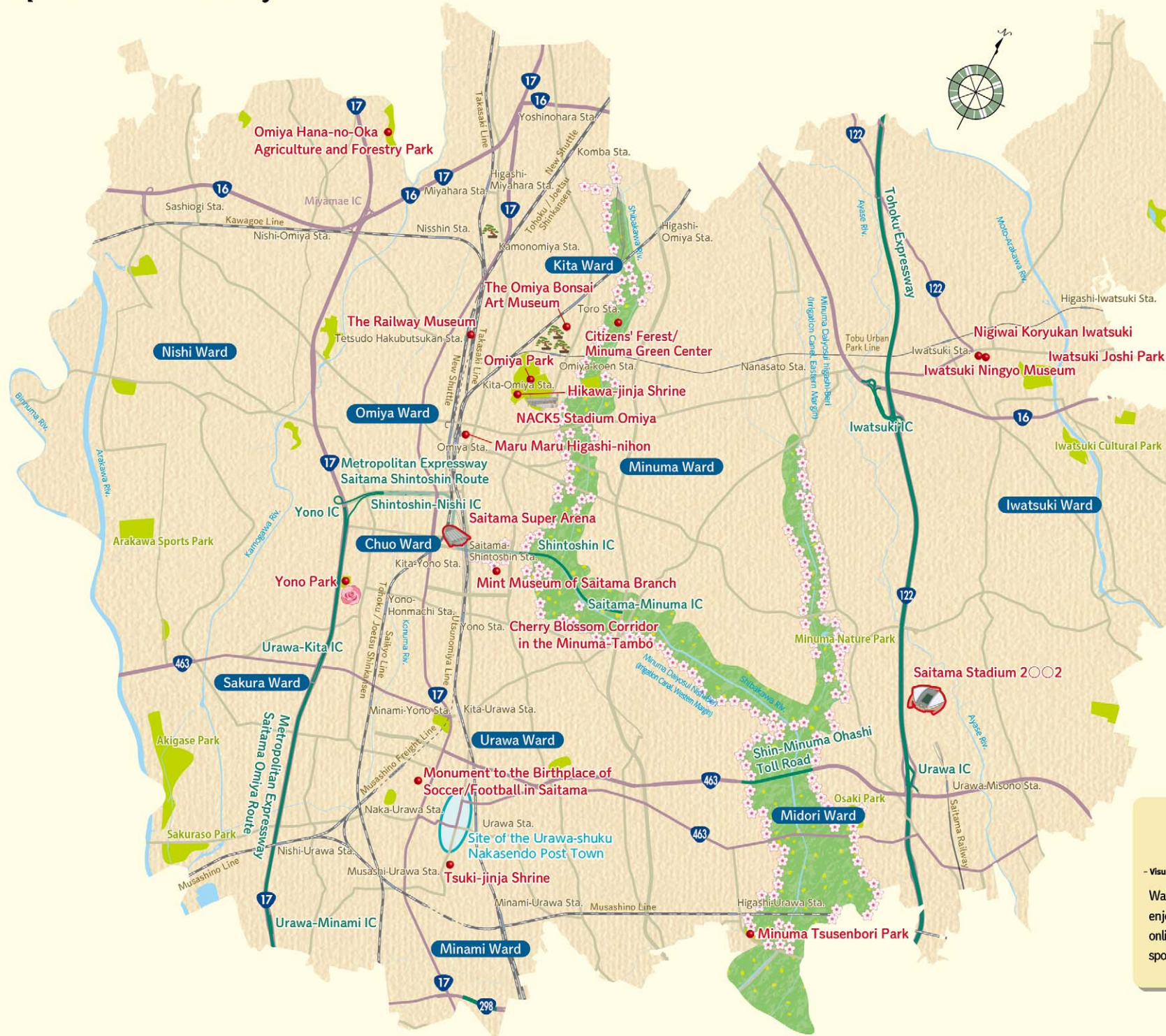


### Iwatsuki Volunteer Guide Association





# Map of Saitama City



Saitama City is one of Japan's leading metropolises, with a population that exceeded 1.3 million in September 2018. Despite its size, Saitama is blessed with abundant natural spaces like the Arakawa River Area and the Minuma-Tambo wetlands. Residents and visitors alike can enjoy strolls along the 20-km Minuma-Tambo Cherry Blossom Corridor, fruit picking, cycling, and more.

Travelers will appreciate Saitama's robust transportation system. As a convergence point for six *shinkansen* train lines, Saitama is developing into a key hub for East Japan. The city is connected by roads like the Tohoku Expressway, Route 17, the Omiya Bypass, the Nishi-Omiya Bypass, the Tokyo Gaikan Expressway, and the Metropolitan Expressway Omiya Route, the latter of which is a direct shot to the heart of Tokyo.

Thanks to this network, the western region has many factories that produce sweets and snacks famous throughout Japan. You can even purchase freshly-made confectionary on-site.

We hope that you will visit Saitama City and enjoy the myriad of tourist activities our region offers. Expand your palate with flavorful local specialties like Omiya Neapolitan and dive into our unique culture. Be sure to experience Saitama's three traditional industries: Iwatsuki *Ningyo* (traditional Japanese dolls), Omiya Bonsai, and Urawa *Uhagi* (eel cuisine).

## Half-day Sightseeing Routes in Saitama City

We recommend 8 routes for touring tourist attractions of the city within about 4 hours. Please take each route to find how attractive Saitama is in many ways.



## さいたまが楽しくなる 見るガイドブック

- Visual guidebook to make your explorations about the city more enjoyable -

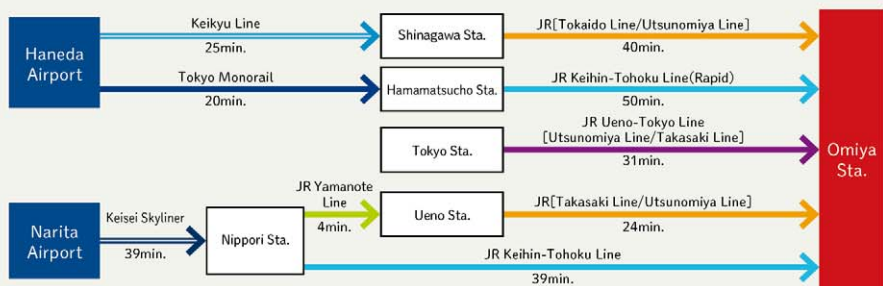
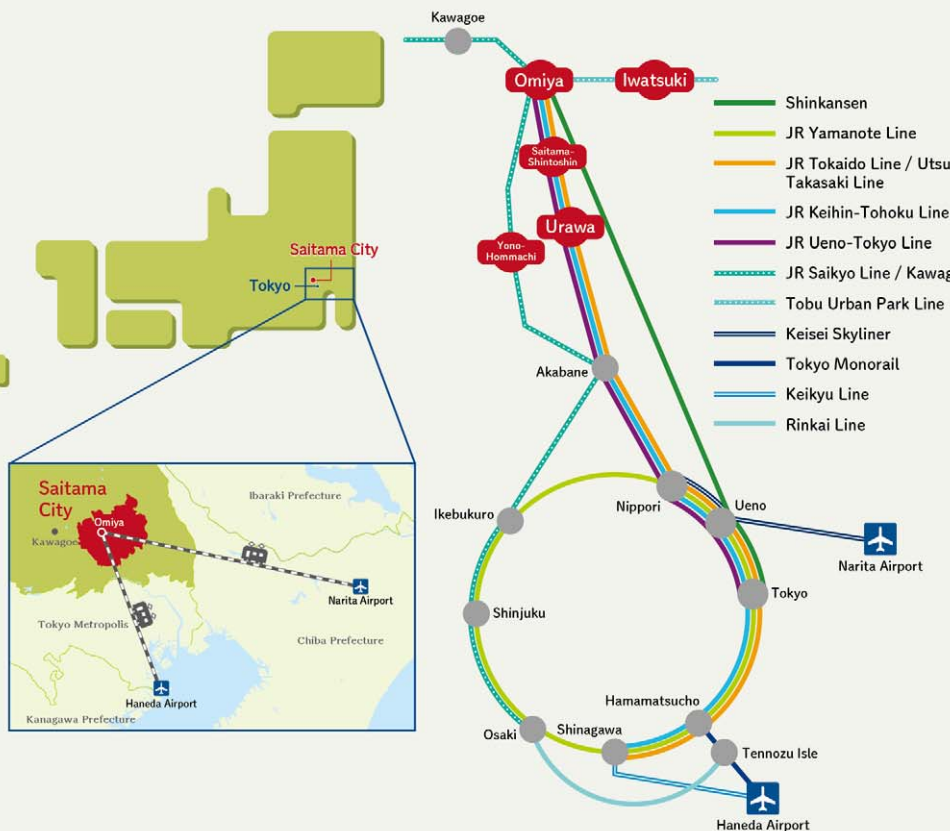
Watch this movie of walking about the city, and you can enjoy tourism model courses in Saitama City online. We invite you to visit the recommended spots in the city with a narrator!



[www.stib.jp/saitama-aruki/](http://www.stib.jp/saitama-aruki/)



# Access to Saitama City



Planning & Production



## Saitama City • Saitama Tourism and International Relations Bureau (STIB)

Tourism and International Exchange Division, Department of Commerce, Industry, and Tourism, Bureau Economic Affairs, Saitama City  
6-4-4 Tokiwa, Urawa-ku, Saitama City  
TEL: 048-829-1365  
<https://www.city.saitama.jp/>



Saitama Tourism and International Relations Bureau (STIB)  
Bibli 2F, 2-1-1 Takahana-cho, Omiya-ku, Saitama City  
TEL: 048-647-8338  
<https://www.stib.jp/>

A total of 110,000 copies of this booklet will be produced in both Japanese and English, at a printing cost of 13.65 yen per copy.  
Please check online for the latest information on events and facilities.

Issued in January 2023